

ISIMET

ITC 2– Panel Style

Integration Interrupt and Time Control Device

Installation Instructions

ISIMET/MAPA, LLC
103 C.J. Wise Parkway
Naples, TX 75568
(903) 897-0737
(903) 897-0740 fax

Copyright © 2015 **ISIMET/MAPA, LLC**,
an affiliate of **WCM Industries, Inc.**
All rights reserved.

The *ISIMET* ITC-2 Integration Time Control Unit provides the time sequencing feature common to systems that are integrated with a building automation or management system “EMS”. Similar to those systems, this unit includes a 24-hour time clock that can be set to specific timing “ON” and “OFF” periods of operation. The unit should be located in an area not accessible to normal classroom activity.

Available In:

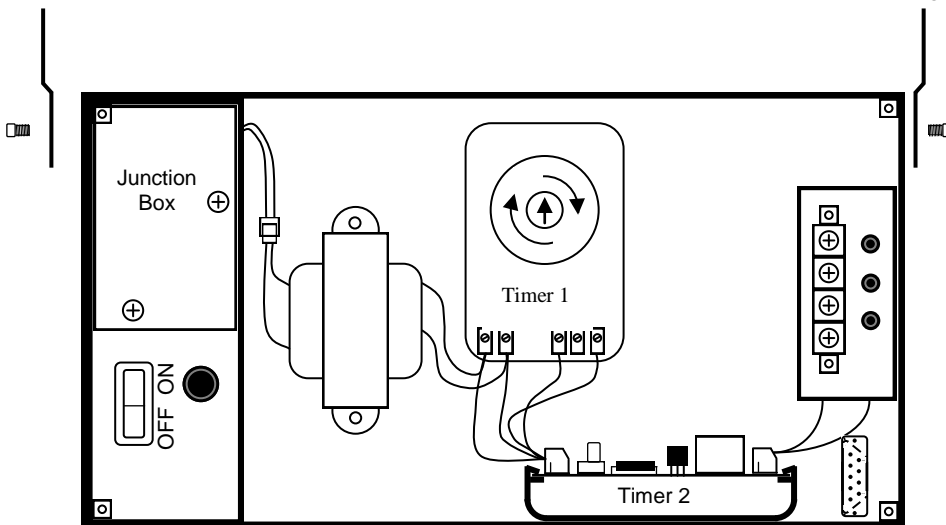
Surface Mount with Gray PC Wall Panel

Flush Mount with UL Stainless Steel Wall Panel

UL Units are also available with Surface Mounting Skirt.

Features:

- 24 Hour or 7 Day settable Timer will turn system on automatically in two hour increments.
- Adjustable output timer will adjust for up to either 5 or 10 minutes.
- Integral Output Terminal with Reset(s)
- Operation Switch: Optional Panel Mounted Switch(s) permits system to be turned OFF-ON-AUTO. Panel mounted “Orange” Active lamp indicates that output is operational.



Surface Mounted Units

Units intended to be surface mounted are provided with two (2) side back mounting flanges.

Flush Mounting the Wall Box:

Using the two (2) provided mounting brackets and four (4) provided screws, secure the unit to a structural member. The unit should be mounted in a location convenient for maintenance so that adjustments to the delay setting are convenient. After mounting and installation of interconnect cabling, we recommend that the cover be placed over the box opening to prevent debris from potentially damaging the unit.

Enclosure Dimensions: 6.0” X 12.25” X 4”

Panel Dimensions: 9.875” X 16”

Important!

All local electrical codes must be followed when installing the unit and connecting the conduit to the service panel and making wiring connections.

Do not install wiring or cable for integrated systems or other interface wiring within conduit for either 24-vac control or 120-vac line voltage. Each wiring system should be housed in independent conduit and not bundled with wiring for other systems.

The device should only be installed by a licensed, qualified craftsman.

Service Requirements: 120/60 vac; Min. 14 AWG	Transformer	MAX Output Load	MAX # Solenoids
24 VAC Output	2 amp	2 Amp	1
24 VAC Output	3 amp	3 Amp	3

Caution: All local codes and regulations should be followed when installing the enclosure and making the piping and conduit connections. Only licensed, skilled craftsmen should install this unit

Installing the Electrical Conduit

Knockout holes for connecting the electrical conduits are located at the top left and right of the Wall Box.

- Connect conduit for the 120-vac operating power to the upper left top of the enclosure at the junction box.
- Connect conduits for the 24-vac Output to the upper right top of the enclosure.

CAUTION: Input-Output signal wiring should not be routed within conduit with 120-vac line wiring.

Wiring the Unit

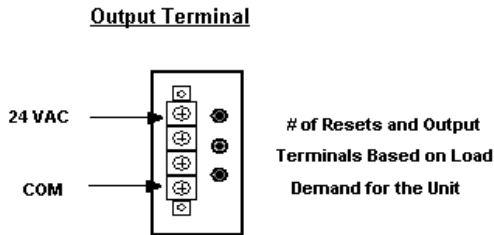
Important!

Verify that the electrical supply is disconnected prior to connecting wiring to the Unit.

To wire the Controller:

1. Remove the junction box cover.
2. Make final connections to the 120-vac electrical service to wiring within the junction box. Verify that line wiring (Black), neutral (White), and ground wire (Green) are correctly connected.
3. Minimum recommended wire size is 14 AWG.
4. Replace the junction box cover before activating or testing the unit.

CAUTION: DO NOT route wiring from this device to the Output solenoid within conduit containing 120-vac line. Output should be housed in a separate conduit.



WARNING: This unit is equipped with a reset switch. If reset trips, check the solenoid for contamination prior to resetting. Solenoid should be cleaned and examined on a minimum of an annual basis.
DO NOT BYPASS RESET!

Wiring Output To Solenoid:

Connect to Terminal Strip as indicated as shown in Figure and per terminal labeling within enclosure.

TIME SETTING FOR TIMER 1

If the Timer is a 7 Day Timer, to set the current time, turn the minute hand clockwise until the day of the week and the time of day on the outer dial is aligned with the triangle marker on the inner dial. **DO NOT set the time by rotating the "OUTER" Dial.**

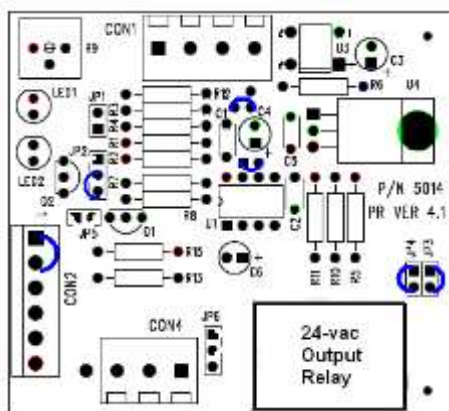
The hourly program dial reflects the hours of the day, AM/PM imprints for each day, and is settable in 15 minute increments

PROGRAMMING the TIMER

The time switch is programmed by pushing the captive trippers to the outer ring position for the entire period that the "EMS" output signal is to be turned "ON" in 15-minute increments. When the tripper is pushed to the inside, Output signal is "OFF". The timer is preset at the factory to the beginning of a fifteen minute period each two hour period.

Example: Set the trippers for the start of each normal purge period to the "ON" position (pushed to outside). The Timer PCB will start on this signal.

Adjust timing here. Adjustments made in a clockwise manner will result in a longer delay time.



Time Delay Settings:

Timing Delay PCB Setting is either from 0 – 5 min. or 5 – 10 min. with standard factory setting of 1 min. The relay may be set for any interval between 0 and 5 minutes or 5 and 10 minutes based upon specific model Number. It is not recommended that field adjustments other than those stated here be made. Please contact ISIMET if changes to other relay settings are desired. To adjust time delay setting, adjust the dial on the PCB using a small flat tip screwdriver. Moving the dial in a clockwise direction will increase the delay time. Timing sequence begins upon receipt of signal from Timer 1.

Wall Panel Features For Units:

If the panel is provided with a maintained key switch then in the “AUTO” position, timing will begin upon signal from timer one. Switch moved to “MANUAL” will allow the system to be purged without opening the unit. “OFF” will prevent the operation of the output. A Green lamp will indicate that the solenoid is operational.

Installing the Wall Panel

- Remove any protective cover previously placed over the face of the Wall Box.
- If so equipped, insert the wall panel plug into the socket. The plug is a polarized 9-pin connector. The socket is mounted onto the right side of the wall box as shown in figure 1.
- Affix panel to box using four (4) 8-32 stainless screws provided with panel.

Note: A non UL unit is provided with a gray powder coat panel for surface mounting. Verify that the wall box installation conforms to the provided wall panel.

CAUTION! Do not install the panel until all wall finishes are complete

Test the Unit:

We recommend that you test the various function of this unit to verify that all features perform as stated here. Also, periodic re-testing to determine component failure or loss of integration with the Controllers or other automation systems such as “EMS” or alarm is recommended.

If the unit fails to operate, contact *ISIMET* or a factory representative.

Operation of the Unit:

The *ISIMET* Time Control Unit provides for a centrally located control for time sequence operation of *ISIMET* Solenoids. The key switch permits a supervisor and/or user to enable the integrated Time Delay unit which will operate for the designated amount of time, enabling the output when the switch is in the “AUTOMATIC” position. Switching to the “MANUAL” position will enable the output should an additional purge be desired. It is recommended that if intended for operation the switch remain in the “AUTOMATIC” position, except when additional purging is needed or no operation is desired. Units with two (2) 24 vac Outputs are provided with two (2) 3-way Switches so that each output can be powered separately.

NOTE: Only qualified craftsmen licensed within the governing jurisdiction to perform the work associated with this installation should install and/or service this equipment.

Warranty:

ISIMET will repair or replace any defective parts or workmanship of this product for a period of one year from date of installation. Damage caused by incorrect installation or improper usage is not warranted. Failure to follow recommended installation, operation, and/or maintenance procedures listed in this manual may void product warranty. Recovery rights shall be limited to the total sum of the amounts paid for the product by the purchaser.

Limits of Liability:

ISIMET's liability shall be limited to costs of repair or replacement parts. This unit is not intended for usage other than those expressly described in this manual. *ISIMET* shall not be liable for damage or injury caused by the improper use of the product.

ISIMET shall not warrant against or assume liability for failure of operation or lack of notification to secondary integrated monitoring systems. The system should be thoroughly tested and adjustments made at time of initial operation. Periodic testing should be conducted by the user to assure that all components function and operate according to specifications.

Care should be taken in the installation of this product. *ISIMET* shall not be liable for damage or injury caused from the improper installation of the product.

DISCLAIMER OR IMPLIED WARRANTY:

THERE ARE NO WARRANTIES THAT EXTEND BEYOND THE DESCRIPTION HEREIN. SELLER DISCLAIMS ANY IMPLIED WARRANTY OF MERCHANTABILITY OF THE GOODS OR OF THE FITNESS OF THE GOODS FOR ANY PURPOSE, AND BUYER AGREES THAT THE GOODS ARE SOLD "AS IS."

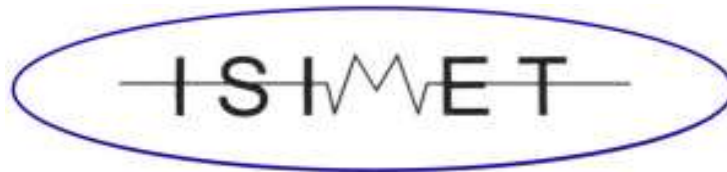
Warranty is Subject to Compliance with Specific Installation Requirements.

This document is copyrighted. This document may not, in whole or part, be copied, duplicated, reproduced, translated, electronically stored, or reduced to machine readable form without prior written consent from *ISIMET*.

Although the material contained herein has been carefully reviewed, *ISIMET* does not warrant it to be free of errors or omissions. *ISIMET* reserves the right to make corrections, updates, revisions, or changes to the information contained herein.

ISIMET is a trademark of *ISIMET/MAPA*, LLC, an affiliate of **WCM Industries, Inc.**

Printed in the United States of America



**ISIMET/MAPA, LLC
103 W. CJ Wise Parkway
PO Box 129
Naples, TX 75568**

**(903) 897-0737 toll free (866) 897-0737 Fax (903) 897-0740
www.ISIMET.com**

Innovative Systems Integrating Mechanical and Electrical Technology